

What Is Flood Mitigation? Revolutionizing Infrastructure Planning In The United States

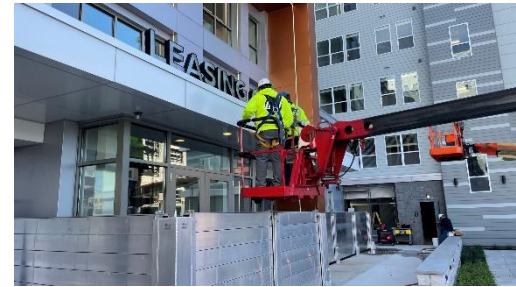
(201) 746-0921 | Sales@OrangeFloodControl.com | OrangeFloodControl.com



Floods are some of the most common, hard-to-predict, expensive, and deadly forms of weather events in the United States. According to a study by First Street Foundation, the 2021 flood events cost domestic businesses over \$25 billion dollars in lost output. This lost output adds up to millions of lost working days each year. As organizations suffer from downtime, they must manage higher costs, timeline delays and damaged trust with clients. Unfortunately, the damage is only expected to rise in the coming decades with increasing flooding events

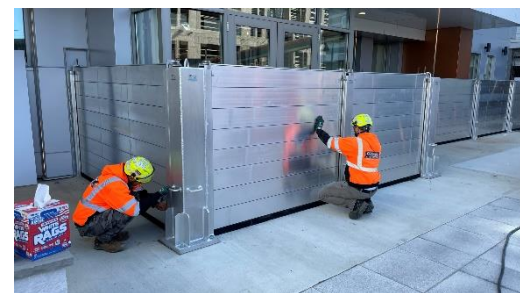
What Is Flood Mitigation?

Flood mitigation design, devices, and solutions reduce the risk of structures experiencing damage. Mitigation is the effort to minimize property damage, loss of life, and the overall environmental impact of natural disasters. Proactive flood control techniques emphasize taking action now - before the next catastrophic weather event strikes. Mitigation lowers a facility's risk from future weather events. These efforts allow businesses and employees to return to the facility quickly after a storm with minimal damage. Mitigation pays off in the long run - often just after one flood. In fact, according to the National Institute of Building Sciences (NIBS), every \$1 spent on mitigation results in \$13 savings from future losses. Proper flood mitigation allows wastewater treatment plants to stay operational and keeps pollutants from entering facilities, infrastructure, and drinking water.



Mitigating Property Risk

Property owners must take an integrated approach to managing and mitigating flood risk. This approach increases awareness and reduces hazards in flood-prone facilities. This involves implementing multiple lines of stormwater defense to shield critical infrastructure assets. A flood risk management strategy should also include solutions and utilities to improve stormwater containment. This helps critical infrastructure assets strengthen their resilience and easily recover from severe periodic flooding. Proactive flood mitigation design seeks to protect commercial or critical infrastructure against future risk. As the number of floods and other natural disasters increase, now is a critical time to expand on hazard mitigation for a community or facility.



Protecting Critical Infrastructure Assets

Use a solution-driven process to protect the most critical infrastructure assets. Our experienced team listens, assesses, and executes an actionable plan to achieve a facility's flood needs before the next storm event. A dependable mitigation system involves any combination of active or passive flood devices. Barriers, planks, doors, and gates are all core components of a flood mitigation system. Flood devices are used to prevent flood damage to multi-family residential, commercial, industrial, institutional, municipal, or critical infrastructure. These powerful solutions defend against flash floods, storm surges, and coastal natural disasters.



Orange Flood Control, LLC is your turn-key flood mitigation company for consulting, device sales, installation, maintenance, service, and training. Call (201) 746-0921 to speak with a flood mitigation expert.

What Is Flood Mitigation? Revolutionizing Infrastructure Planning In The United States

(201) 746-0921 | Sales@OrangeFloodControl.com | OrangeFloodControl.com



Passive Flood Mitigation

Passive flood control technologies operate automatically during a major flood or natural disaster to prevent water damage to a facility. These automatic devices don't require any human involvement or manpower to protect your facility's structures. Some of the most popular options include passive gates, entry doors, or glass walls. Passive flood devices are the optimal choice of flood water defense 24/7 - without human involvement. No dependence on power, people, or manual intervention, improves a property's resilience from even the most severe storms. These automatic devices protect hundreds of schools, commercial buildings, multi-family residences, and critical infrastructure assets from devastating natural disasters.

Passive Flood Device Options

- Flood Doors
- Flood Glass
- Concealed Automatic Gates



Point-Of-Use Flood Mitigation

These dependable, simple solutions are strategically designed for rapid manual deployment. This unique configuration uses minimal storage space and promotes superior visual aesthetics. Point-of-Use storage can be out-of-sight, custom-designed to fit any opening, and camouflaged. Point-of-use flood devices serve as impact-resistant barriers during severe weather events. Watertight seals and prefabricated anchors support rapid deployment. Facilities can deploy these devices later, resulting in minimized operational downtime and disruption. This allows organizations to reduce losses and unsatisfied clients.

Point-Of-Use Device Options

- Vertical/Side Deploy
- Swing Gates
- Sliding Doors

Active Flood Mitigation

These dry floodproofing devices keep surging stormwater out - minimizing economic impact and harm to critical infrastructure. This helps to keep communities safe and promotes social well-being. These manual barriers are reliable, effective flood defense. Active devices can be manually deployed for emergency flood protection across building openings. Their high-strength design also defends against strong winds and debris impacts. With rapid and easy deployment, facilities can secure their sites quickly.

Active Flood Device Options

- Flood Planks
- Flood Panels
- Flood Shields

